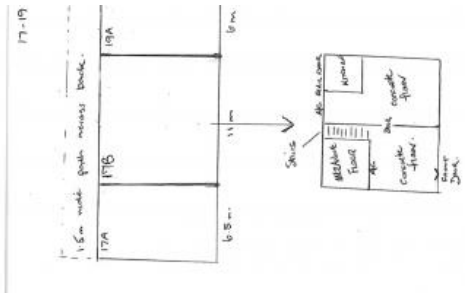


Just Listed



17A Darling Tce, Whyalla



17A-19 Darling Terrace, Whyalla - Sea-side Rural Multi-property Asset For Sale

Located in the coastal town of Whyalla, 17A-19 Darling Terrace offers a multi-use complex consisting of three long-term stable tenancies.

This is a low maintenance investment with an impressive decade long history of maintaining a consistent and fully tenanted status.

Positioned only streets away from the ocean, Darling Terrace provides a unique seaside location within walking distance to the Whyalla jetty, marina, retail shops and restaurants making this a prime opportunity for those looking to invest in the heart of the Eyre Peninsula.

Best suited to the savvy investor looking for a stable and secure seaside investment!

The above information provided has been furnished to us by the vendor/s. We have not verified whether or not that information is accurate and do not have any belief in one way or the other in its accuracy. We do not accept any responsibility to any person for its accuracy and do no more than pass it on. All interested parties should make and rely upon their own inquiries in order to determine whether or not this information is in fact accurate.

Price	\$500,000
Property Type	commercial
Property ID	1404
Land Area	335 m2

Agent Details

Nikita Shaw - 0478021763
Remo Russo - 0400 711 040

Office Details

Commercial Adelaide
22 Peel Street Adelaide SA 5000
Australia
08 8227 1339

